

## Gear Measurement and Evaluation Software for CNC Coordinate Measuring Machines

# GEARPAK Express



For more effective and reliable gear measurement

The screenshot displays the GEARPAK Express software interface. The top window shows a 3D model of a gear with various measurement points marked. The bottom window shows a detailed involute profile graph with the following data:

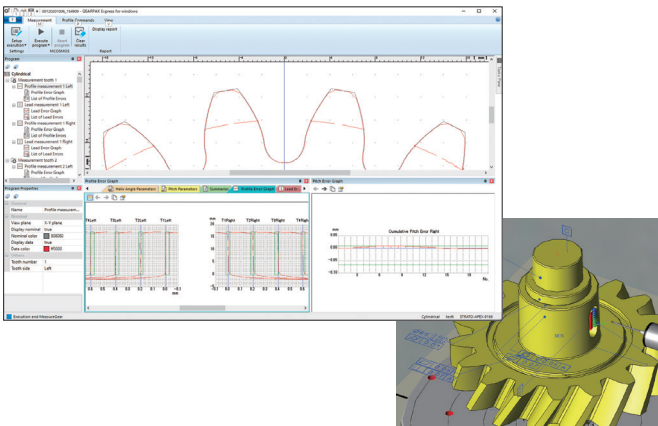
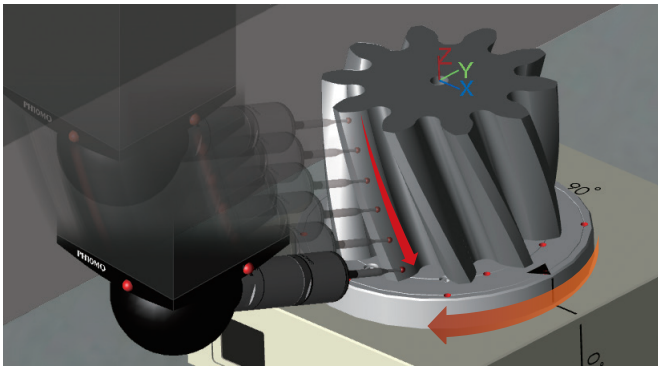
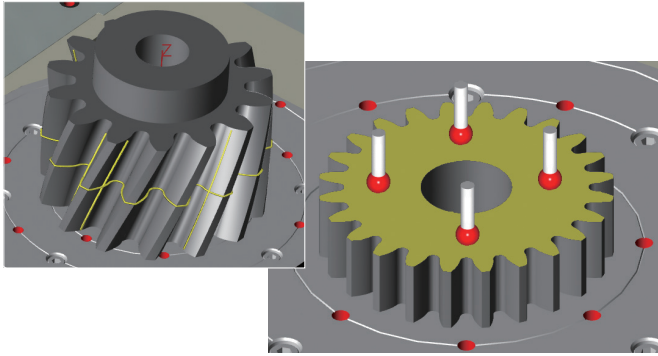
Q <sub>1</sub>	Q <sub>2</sub>	Q <sub>3</sub>	Q <sub>4</sub>	Q <sub>5</sub>	Q <sub>6</sub>	Q <sub>7</sub>	Q <sub>8</sub>
5.3 <-7	7.5 <-7	20.4 0	5.5 <-7	65.9883	5.3 <-7	6.9 <-7	5.2 <-7
4.7 <-7	8.1 <-7	20.3 0	5.7 <-7	64.0000	4.2 <-7	2.5 <-7	3.4 <-7
-2.2 <-7	-4.9 <-7	8.8 <-7	-2.8 <-7	65.8185 <-7	-5.4 <-7	-6.2 <-7	-5.4 <-7

Additional parameters shown in the graph include:  $F_0 Q_6 = 31.0$ ,  $F_0 Q_8 = 24.0$ ,  $F_0 Q_7 = 20.0$ ,  $F_0 Q_5 = 20.0$ ,  $F_0 Q_4 = 20.0$ ,  $F_0 Q_3 = 20.0$ ,  $F_0 Q_2 = 20.0$ ,  $F_0 Q_1 = 20.0$ .

Coordinate Measuring Machines



# Perfect for measuring gear dimensions



## Intuitive operation

- A 3D model created from the provided gear specifications enables you to visually and easily check whether measurement will be performed as intended.
- Automatic program creation and on-screen measurement guidance help quick and easy setting of the coordinate system.
- Supports ANSI/AGMA, ISO, and JIS standards.

## High-speed scanning measurement

- "4-Axis nominal scanning"<sup>\*1</sup> can make scanning even faster. The measurement time can be reduced up to 50%<sup>\*2</sup> compared with the conventional method.
- Active 3D nominal scanning.

\*1 A rotary table (optional) is necessary.

\*2 The value depends on the gear size and required accuracy.



Watch a video of high-speed scanning measurement ►

## Quick feedback

- The real-time display of the measurement result and tolerance judgment result enables early detection of non-conforming product.
- You can perform dimensional measurement and geometrical tolerance evaluation without changing the setup during gear evaluation.
- Allows you to create customized reports.

Note: The view on the left is CAT1000.

Please contact your local Mitutoyo Sales Office for more details

Coordinate Measuring Machines

Vision Measuring Systems

Form Measurement

Optical Measuring

Sensor Systems

Test Equipment

Digital Scale and DRO Systems

Small Tool Instruments and Data Management



Find additional product literature and our product catalog

[www.mitutoyo.com](http://www.mitutoyo.com)

Note: All information regarding our products, and in particular the illustrations, drawings, dimensional and performance data contained in this printed matter as well as other technical data are to be regarded as approximate average values. We therefore reserve the right to make changes to the corresponding designs. The stated standards, similar technical regulations, descriptions and illustrations of the products were valid at the time of printing. In addition, the latest applicable version of our General Trading Conditions will apply. Only quotations submitted by ourselves may be regarded as definitive. Specifications are subject to change without notice.

Mitutoyo products are subject to US Export Administration Regulations (EAR). Re-export or relocation of our products may require prior approval by an appropriate governing authority.

### Trademarks and Registrations

Designations used by companies to distinguish their products are often claimed as trademarks. In all instances where Mitutoyo America Corporation is aware of a claim, the product names appear in initial capital or all capital letters. The appropriate companies should be contacted for more complete trademark and registration information.

# Mitutoyo

Mitutoyo America Corporation

[www.mitutoyo.com](http://www.mitutoyo.com)

One Number to Serve You Better

1-888-MITUTOYO (1-888-648-8869)

### M3 Solution Centers:

Aurora, Illinois (Headquarters)

Boston, Massachusetts

Charlotte, North Carolina

Cincinnati, Ohio

Detroit, Michigan

Los Angeles, California

Seattle, Washington

Houston, Texas